

## Conversations on the Forest

2012.1105

A series of fireside chats delving deeply into facts and futures of the forests of Lane County and the Pacific Northwest.

The forest is central to our regional identity, ecology, and economy. Competing public and private interests have driven growth, decline, and political division for decades. In a series of ongoing discussions, Lane County Commissioner [Rob Handy](#), public interest forester Roy Keene, and ArchitectureWeek editor-in-chief [Kevin Matthews](#) explore the past, present, and future of our forests with a depth and openness rarely seen.

Who owns Lane County's forests, and how have they changed over time? How does forest management, on both public and private land, benefit and impact Lane County residents? Can we sustain the forest, and all its many benefits?

First Mondays • 6:00-7:30pm

Cozmic Pizza, 199 W. 8th Ave. in Eugene

For more information: <http://www.conversationsontheforest.org>

Contact: Rob Handy [rob@robhandy.com](mailto:rob@robhandy.com)

### Series Topics

Spring 2012: [Forest Facts](#) • [Forest Economics](#) • [Public Goods and Ecology](#) • [Rural Communities](#) • [Forest Futures](#)

Fall 2012: Oregon Forest Practices Act • Governor Kitzhaber's Timber Panel • continuing in 2013

### Facts about Lane County, Oregon

Total Area = 3,022,080 acres (4,722 sq mi)

Land = 2,913,920 acres (4,553 sq mi)

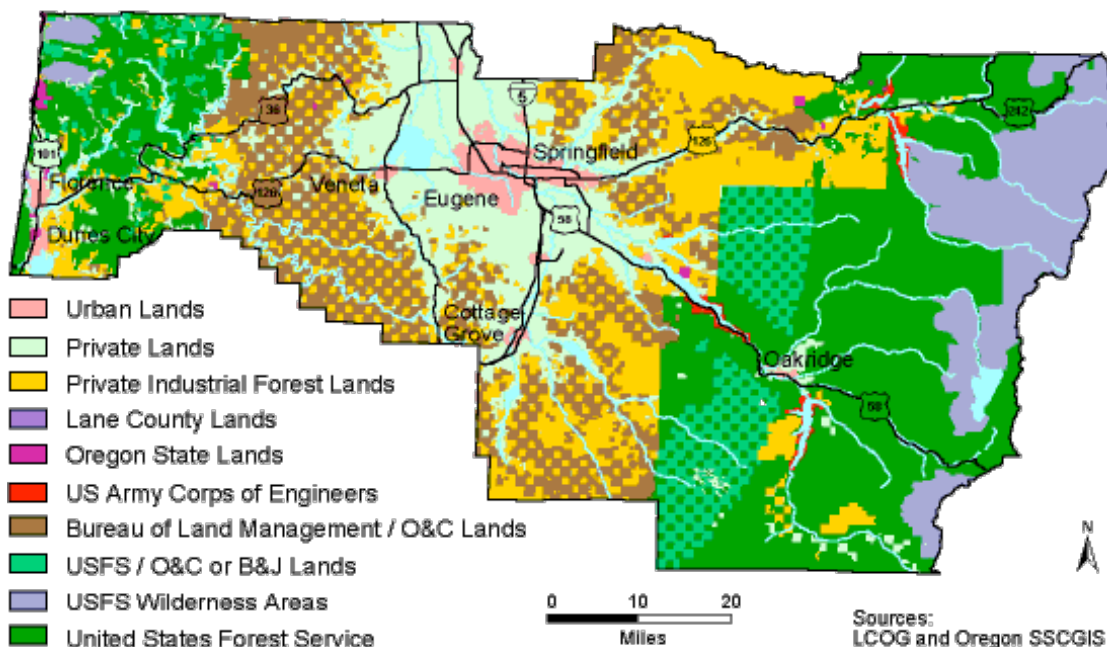
• Forest = 2,439,182 acres (3,811 sq mi) = about 80% of total land area

• Old Growth Forest = about 250,000 acres (390 sq mi) = about 10% of total forest area

Water = 107,520 acres (168 sq mi) = 3.55% of total area

Official total population in 2010 = 351,715 people • Eugene & Springfield = 215,588 = 61% of Lane County

## LAND OWNERSHIP



*Lane County, Oregon*

M. Forest, 1999; T. Stopa and C. Grey 1998

### Lane County Land Ownership

- Total publicly owned land = 58% = 1,752,819 acres
- Total privately owned land = 32% = 1,269,261 acres
- Privately owned industrial timberland = 20% = 597,600 acres
- U.S. Forest Service = 48% = 1,450,598 acres (parts of the Willamette and Umpqua National Forests)
- U.S. Bureau of Land Management (BLM), State of Oregon, Lane County and other public entities = ~10% of total area = about 300,000 ac.
- Privately owned industrial timberland, at 597,600 acres is about twice the area of non-

Forest Service public land — in other words, about twice the area of O&C forest.

## Conversations on the Forest

### Governor Kitzhaber's Timber Panel

#### *Representing O&C Counties*

**Doug Robertson** – Douglas County Commissioner (since 1980). Republican. President of the Association of O&C Counties. Closely associated with Congressman Greg Walden. Former Roseburg City Councilor.

**Tony Hyde** – Columbia County Commissioner (since 1997). Republican. Forest biomass promoter, and opponent of normal EPA air pollution regulations for biomass plants. Apparently a supporter of coal export through Port of St. Helens.

**Simon Hare** – Josephine County Commissioner (since 2010). Republican. Former legislative intern for Senator Gordon Smith. Mixed business background.

**Jamie Damon** – Clackamas County Commissioner (since 2011). Democrat. Professional mediator - worked in Lane County on West Eugene Collaborative, I-5 Willamette River bridge.

#### *Representing Forest Products Industry*

**Allyn Ford** – President and CEO, Roseburg Forest Products (since 1997). Major Republican campaign contributor. Oregon State Board of Higher Education, Director of the Doernbecher Hospital Foundation and the World Forestry Center, Chairman of the Board, Umpqua Bank. • "Allyn Ford's father started Roseburg Forest Products [in 1936]. Today, Kenneth Ford's ... son oversees 3,700 employees and a veritable wood-products manufacturing empire: one sawmill, four plywood plants, two particleboard plants, one engineered wood products plant, a veneer plant, and an export dock and loading facility for wood chips." • Contributed \$5 million to endow the "Cheryl Ramberg and Allyn C. Ford Deanship of Forestry" at Oregon State University

**Dale Riddle** – Seneca Sawmills. Republican. Northwest Forest Plan opponent. Major funders for Measure 37. Biomass promoter and public subsidy recipient. Assisted personally in bogus conservative lawsuit against Lane County Commissioners Pete Sorenson, Rob Handy and Bill Fleenor. • "Seneca Sawmill is the third largest-producing, single-location sawmill in the USA."

**Jennifer Phillippi** – Rough and Ready Lumber Co. Republican campaign contributor. Third-generation family sawmill and forest landowner. Member, Oregon Board of Forestry. • "Phillippi views the current Oregon Forest Practices Rules as both 'productive and flexible, allowing landowners to respond to the conditions of different forest types while accommodating diverse individual objectives.'"

**Ray Jones** – Stimson Lumber, Vice President of Resources (since 2008). Previously Vice-President of Resources at Roseburg Forest Products. Board of Directors, Oregon Forest Resources Institute (Class 3, 100 million bd-ft/yr) • "Stimson Lumber Company has assets and operations in four Western States: Idaho, Montana, Oregon, and Washington."

#### *Representing Conservation*

**Greg Block** – Wild Salmon Center <http://www.wildsalmoncenter.org> — works on salmon issues

**David Dreher** – Pew Foundation <http://www.pewenvironment.org> — former senior legislative aide to Peter DeFazio. "Played a key role in writing and negotiating the Healthy Forest Restoration Act."

**John Kober** – Pacific Rivers Council <http://pacificrivers.org> — works on salmon issues

**Sybil Ackerman** – Sybil Ackerman Strategies — Oregon Board of Forestry

**Bob Davison** - Defenders of Wildlife <http://www.defenders.org> — appears to work on salmon issues

**Jack Williams** – Trout Unlimited <http://www.tu.org> — former BLM, Forest Service, works on salmon issues

#### *Facilitator*

**John Ehrmann** – Meridian Institute

[www.conversationsontheforest.org](http://www.conversationsontheforest.org)